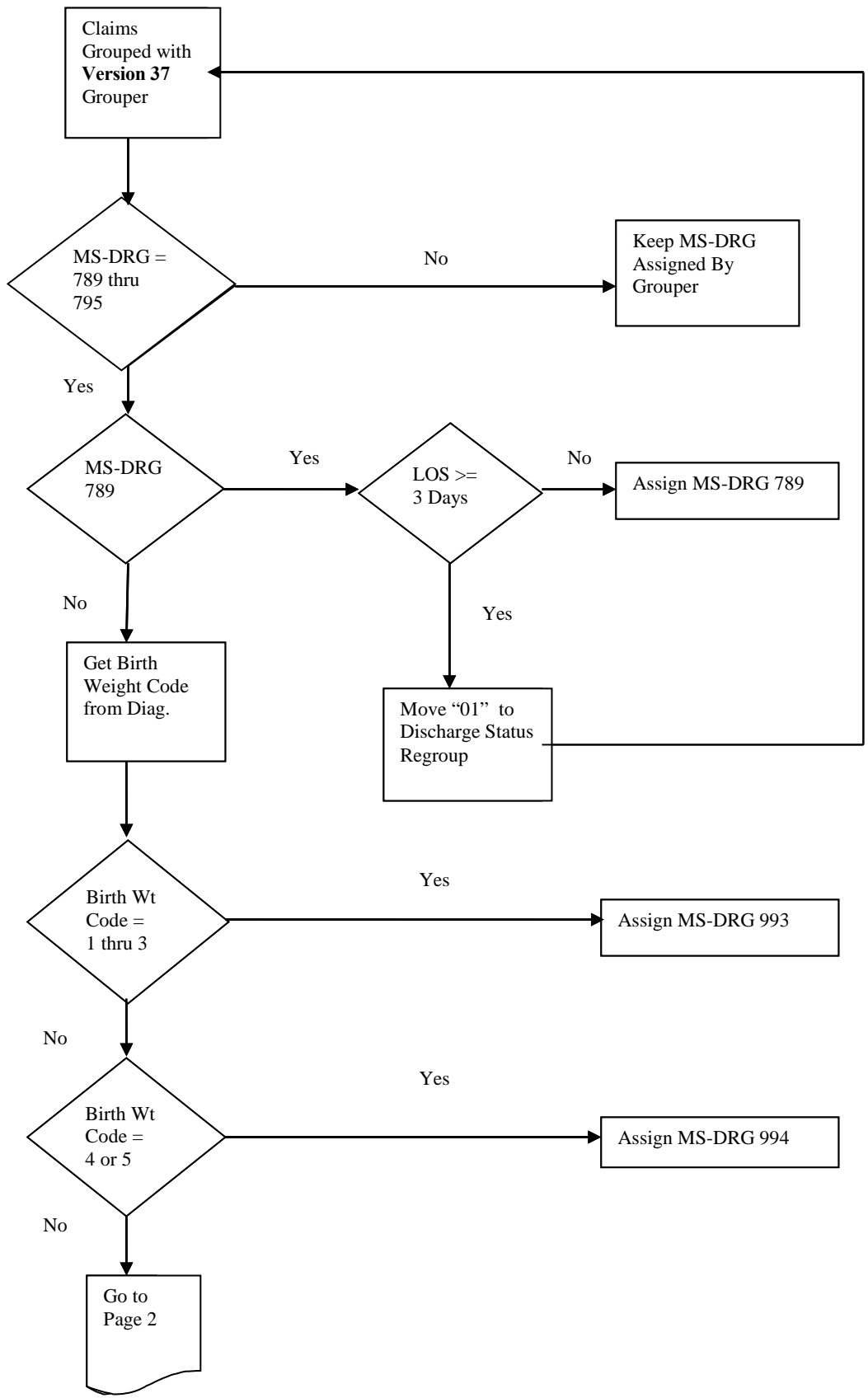
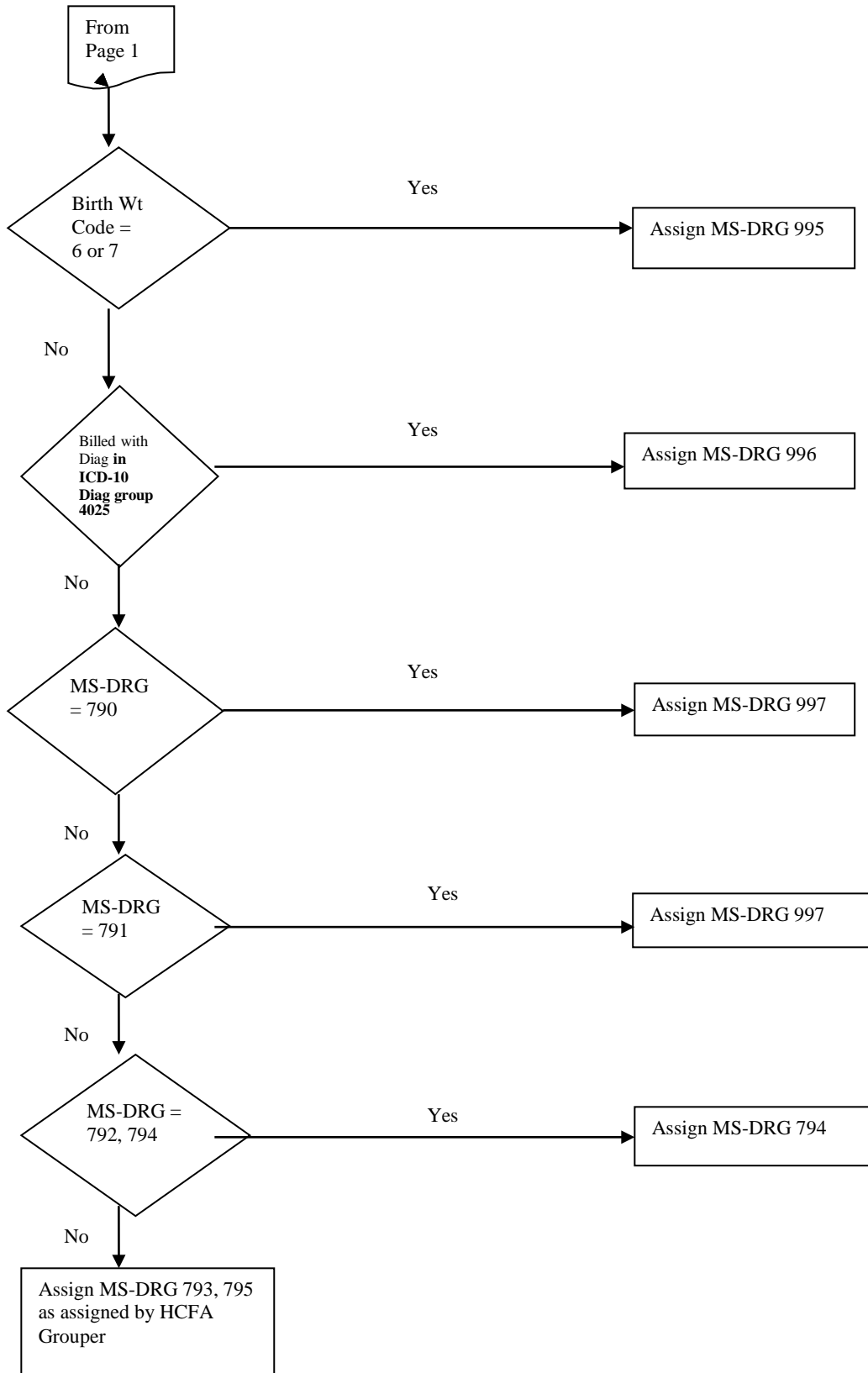


## Assignment of Neonatal MS-DRGs





**NOTE: Bolded information indicates changes made to the flow chart for MS-DRGs.**

Determining Birthweight Codes from **ICD-10-CM** Diagnosis Codes

The following is the structured code which should be utilized in determining BirthWt-Code for DRG assignment.

Definitions:

BirthWt-Code            One byte work area to hold the result of the lowest Birthweight determined from the claim.

Diag-BirthWt            The last digit of neonatal ICD-10-CM diagnosis codes **P05.00-P05.9, P07.00-P07.32, and P22.0**. This specifies the birthweight in grams.

Determine BirthWt-Code.

Move High-Values to BirthWt-Code.

Perform Check-Diag-Weight-Code.

    Until there-are-no-more-diag-codes or Diag-Code(Index) = 00000 or spaces.

If BirthWt-Code = High-Values

    Move 9 to BirthWt-Code.

Else

    Next Sentence

End-Determine-BirthWt-Code.

Check-Diag-Weight-Code.

If Diag Code (Index) = **P05.00-P05.9, P07.00-P07.32, and P22.0**

    If Diag-BirthWt > 0

        If BirthWt-Code = 0

            Move Diag-BirthWt to BirthWt-Code

        Else

            If Diag-BirthWt < BirthWt-Code

                Move Diag-BirthWt to BirthWt-Code

        Else

            Next Sentence

    Else

        If BirthWt-Code = High-Values

            Move Diag-BirthWt to BirthWt-Code

        Else

            Next Sentence

Else

    Next Sentence

End-Check-Diag-Weight-Code

The result of this will be to look for diagnosis codes **P05.00-P05.9, P07.00-P07.32, and P22.0**.  
If one of these diagnosis codes is found, check the birthweight indicator digit.  
Keep the lowest nonzero birthweight indicator from these diagnosis codes.  
If all diagnosis codes in this range have a zero in the last digit, keep the zero.  
If none of the diagnosis codes on the claim are from this range, use a weight code of 9.